

July 14, 1987  
2371B/hdm

Introduced by: BILL REAMS

Proposed No.: 87-538

ORDINANCE NO. 8200

AN ORDINANCE establishing the date of an election on the question of annexation of the City of Carnation to King County Fire Protection District No. 35.

STATEMENT OF FACT:

1. The City of Carnation, Washington, by Ordinance No. 362 has determined that it is in the public interest, health, safety and general welfare to provide for annexation to Fire District No. 35 in accordance with Chapter 52.04 R.C.W.

2. Said ordinance does satisfy the provisions of R.C.W. 52.04.061 for qualification for annexation.

3. King County Fire Protection District No. 35, by Resolution No. 122, concurs in the annexation of the City of Carnation to the district as provided by R.C.W. 52.04.071.

BE IT ORDAINED BY THE COUNCIL OF KING COUNTY:

SECTION 1. A special election shall be held on the 3rd day of November, 1987, in accordance with R.C.W. 52.04.071 to be held in the City of Carnation and the King County Fire Protection District No. 35.

SECTION 2. The ballot title, as directed by statute, should be as follows:

Shall the City of Carnation be annexed to and be a part of King County Fire Protection District No. 35?

YES \_\_\_\_\_

NO \_\_\_\_\_

SECTION 3. This ordinance shall be null and void and have no force or effect, if the Boundary Review Board for King County has not approved the proposed annexation by September 7, 1987.

1 SECTION 4. The county council finds as a fact and declares  
2 that this ordinance is necessary for the preservation of public  
3 peace, health or safety or for the support of county government  
4 and its existing public institutions.

5 INTRODUCED AND READ for the first time this 27<sup>th</sup> day  
6 of July, 1987.

7 PASSED this 31<sup>st</sup> day of August, 1987.

8 KING COUNTY COUNCIL  
9 KING COUNTY, WASHINGTON

10  
11 *Gary Grant*  
12 Chairman

13  
14 ATTEST:

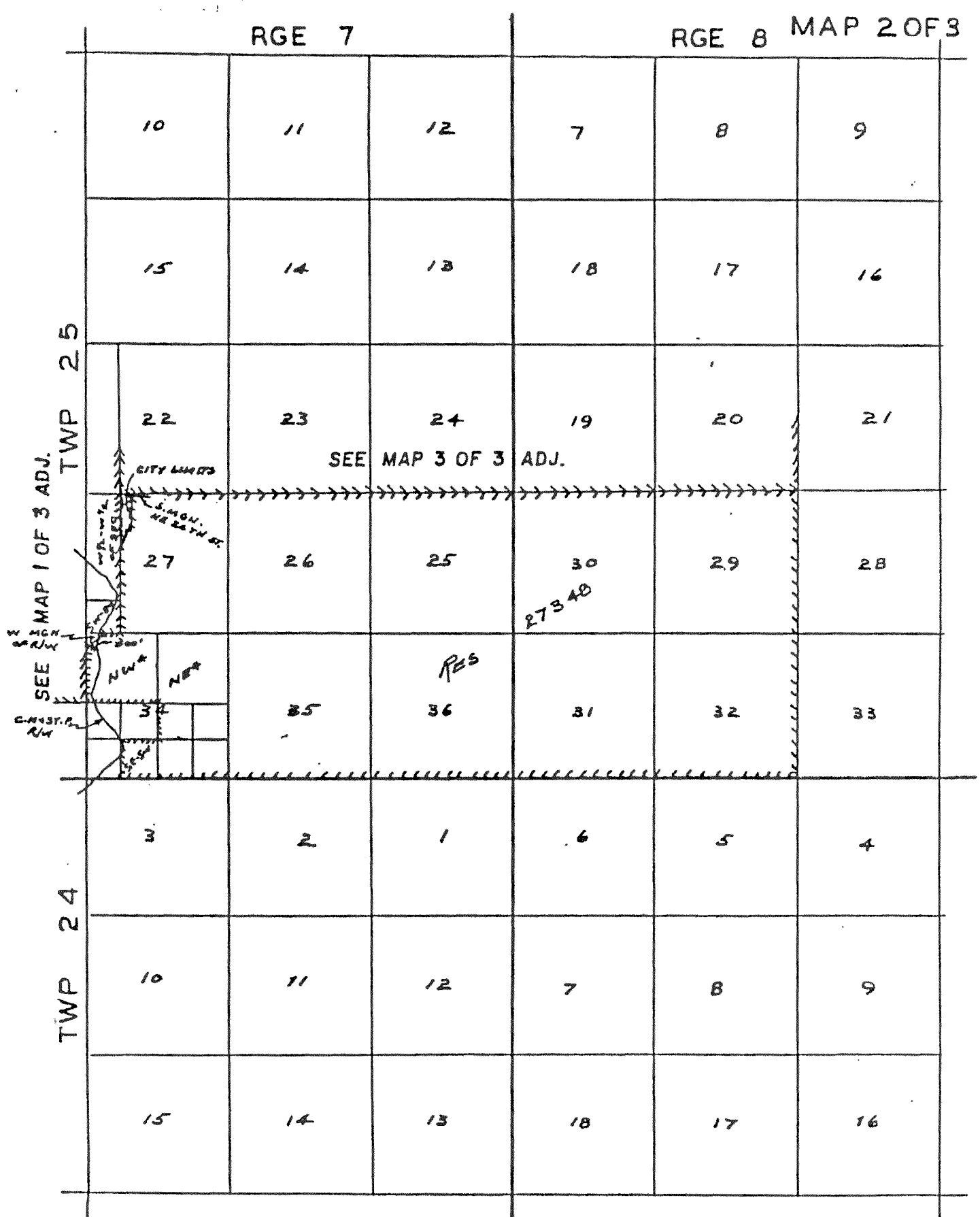
15  
16 *Donna M. Quana*  
17 Clerk of the Council

18 APPROVED this 1<sup>st</sup> day of September, 1987.

19  
20 *Orin Hill*  
21 King County Executive

# FIRE DISTRICT 35

RES 27348 2/10/64 KING COUNTY ASSESSOR



OLD SMALL MAPS FOR  
 PLOTS PRIOR TO  
 MAP 3 OF 3

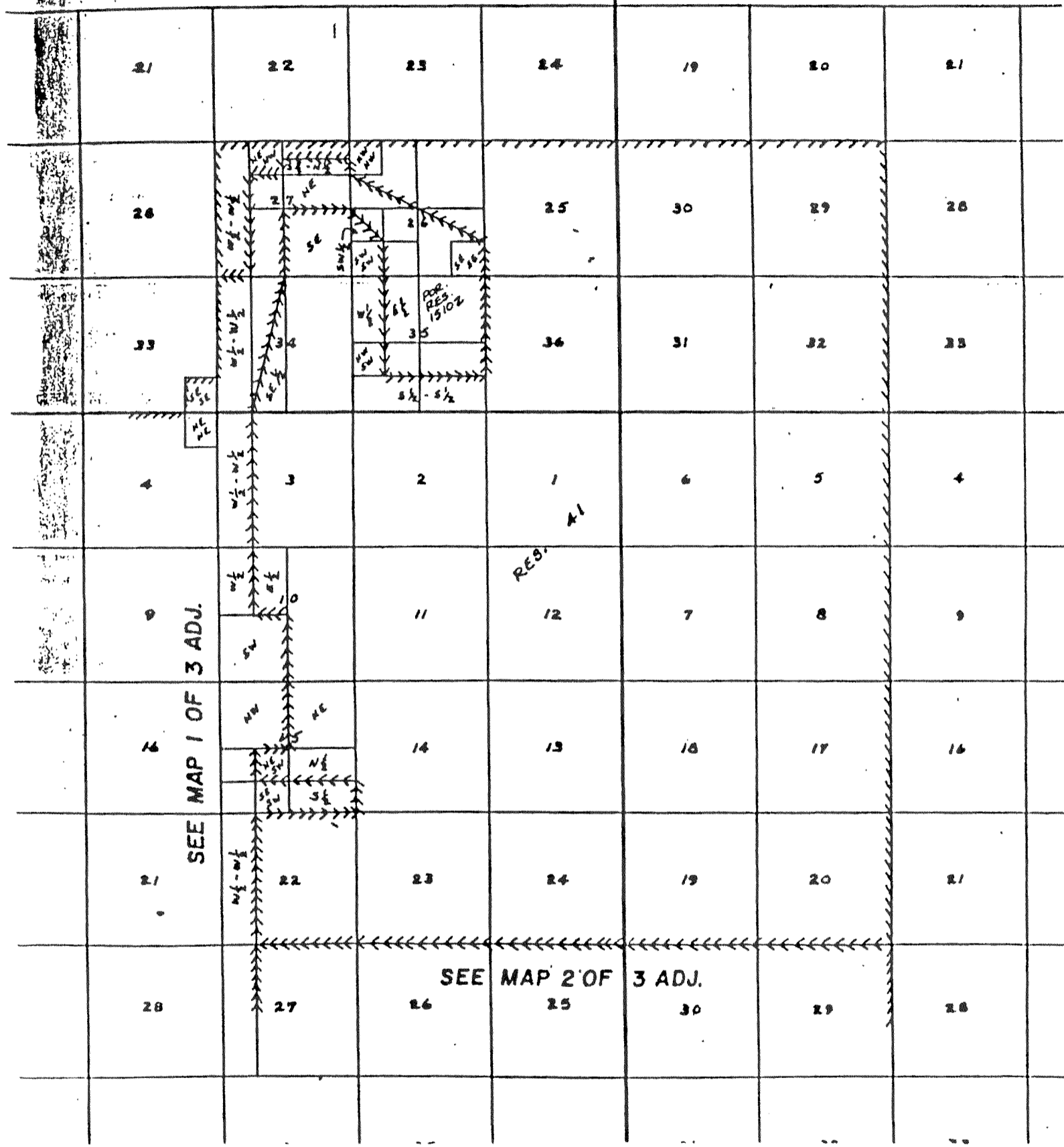
SCALE 1" = 5280'

5209

LESS INCORPORATED AREAS WITH  
 R.C.W. 52.22:020

RANGE 7

RANGE 8



# FIRE DISTRICT

## KING COUNTY ASSESSOR

TWPS 25-26

RANGES 6-7

REG. 10890 PASSED JUL 26 1948  
RES. 45102 " " " " 1947 1948  
" 24699 " " " " 8-2-52

# 35

LESS INCORPORATED AREAS WITHIN  
R.C.W. 52.22.020

MAP 1 OF 3

